

**MINUTES, LIMESTONE COUNTY COMMISSION, APRIL 18, 2022
COMMISSION MEETING**

The Limestone County Commission met in a regular meeting today, at 10:00 a.m. at the Clinton Street Courthouse Annex, 100 South Clinton Street, Athens, Alabama.

Present: Daryl Sammet, Danny Barksdale, Jason Black, and LaDon Townsend. Absent: None. Collin Daly, Chairman presided.

Bryan Lorge addressed the Commission regarding the Athens-Limestone Recycling Center.

The meeting began with the Pledge of Allegiance.

MOTION was made by Jason Black and seconded by Danny Barksdale to approve the minutes of April 4, 2022.

The Chairman asked if there was any discussion. There was no discussion. The Administrator called the roll. Jason Black, aye; Danny Barksdale, aye; Daryl Sammet, aye; and LaDon Townsend, aye. Motion carries unanimously.

MOTION was made by Daryl Sammet and seconded by LaDon Townsend to approve the following claims:

4/08/2022	Check # 0065056 - 0065137	\$ 396,330.77
4/14/2022	Check # 0065138 - 0065210	<u>\$ 1,046,627.59</u>
	TOTAL	\$ 1,442,958.36

The Chairman asked if there was any discussion. There was no discussion. The Administrator called the roll. Daryl Sammet, aye; LaDon Townsend, aye; Danny Barksdale, aye; and Jason Black, aye. Motion carries unanimously.

MOTION was made by Jason Black and seconded by Danny Barksdale to approve a resolution regarding the sale of real property located in the Athens and Limestone County Highway 31 Industrial Park.

RESOLUTION NO. _____

**A RESOLUTION REGARDING THE SALE OF REAL PROPERTY LOCATED
IN THE ATHENS AND LIMESTONE COUNTY
HIGHWAY 31 INDUSTRIAL PARK**

WHEREAS, the Limestone County Commission, as the governing body of Limestone County, Alabama (the "County"), and the City of Athens, Alabama (the "City"), jointly own certain real property situated along Clyde Mabry Drive in the Athens and Limestone County Highway 31 Industrial Park, consisting of approximately 10.4 acres of undeveloped land, and more particularly described as follows: *Lot 5 of the Final Plat of Thirty-One Commercial Park Addition No. 2* (the "Property");

WHEREAS, in a prior resolution, the Limestone County Commission approved the sale of the Property for industrial or commercial use by the buyer of the Property, upon certain terms;

**MINUTES, LIMESTONE COUNTY COMMISSION, APRIL 18, 2022
COMMISSION MEETING**

WHEREAS, the County Commission wishes to amend those terms as stated herein;

WHEREAS, this Resolution is authorized by Section 94.01 of the *Constitution of Alabama*, and other applicable law; and

WHEREAS, upon motion having been duly made by Commissioner Black, and seconded by Commissioner Barksdale, to approve this Resolution, pursuant to the terms and conditions therein, as proposed; and, with said motion and second having been made in an open meeting of the Commission on the 18th day of April 2022 with discussion had thereon and a vote having been taken, upon which vote said motion carried by a vote of 4 to 0;

THEREFORE, BE IT RESOLVED BY THE LIMESTONE COUNTY COMMISSION, during its meeting on the 18th day of April 2022 commencing at 10:00 a.m. as follows:

BE IT HEREBY RESOLVED that the Chairman of the Limestone County Commission, on behalf of the Limestone County Commission, is authorized to enter into a contract to sell the Property to Grantland upon the following terms:

(i) purchase price of \$200,000;

(ii) earnest money of \$5,000;

(iii) the Property will be subject to a restrictive covenant, in favor of City and County, for a term of fifteen (15) years, limiting the use of the Property to a veterinary hospital and related offices. However, the restrictive covenant would terminate early if a bank lender sells the property at a foreclosure sale to a third party (a third party unrelated to Grantland by blood or business affiliation) due to Grantland's failure to pay a loan that was used solely for the purchase of the property and/or the construction of improvements on the property;

(iv) for fifteen (15) years after the closing, neither the Property, nor any part of it, may be sold or transferred, unless the City and County shall first have an option to repurchase the Property (or part of it) for (a) the same price (plus the appraised cost of any improvements), or (b) if the property has been foreclosed upon by a financing bank due to Grantland's failure to pay a loan that was used solely for the purchase of the property and/or the construction of improvements on the property, then for the outstanding balance of the loan amount, whichever is greater;

(v) transfer by statutory warranty deed;

(vi) a sixty (60) day due diligence period;

(vii) closing to occur within 30 days after due diligence period;

(viii) the buyer shall pay for all closing expenses; and

**MINUTES, LIMESTONE COUNTY COMMISSION, APRIL 18, 2022
COMMISSION MEETING**

(ix) such other terms and conditions that the Chairman may determine are not inconsistent herewith.

The Chairman is authorized to do so through the execution, ratification, and/or performance of a “Purchase and Sale Agreement”, and any amendment thereto, containing these terms.

BE IT FURTHER RESOLVED that the Chairman of the Limestone County Commission shall be authorized to further execute any and all documents and instruments that may be necessary to complete the County’s performance and closing of the sale of the Property, including the approval of any modifications to the contract for sale that may be inconsequential to the substantive terms of said agreement, and to take such actions as may be necessary to effect and carry out the transactions contemplated by this Resolution. This authority includes, but is not limited to, approving and executing agreement(s) with the City concerning operational details, logistics, and allocation of costs/responsibilities as between the City and County, that are consistent with and involved in carrying out the transactions contemplated by this Resolution.

The authority granted herein shall be in force and effect immediately upon passage of this Resolution.

ADOPTED AND APPROVED this 18th day of April 2022.

Limestone County Commission Chairman

ATTEST:

County Clerk/Administrator

The Chairman asked if there was any discussion. There was a comment made that this property is also referred to as “Athens Commercial Park”. The Administrator called the roll. Jason Black, aye; Danny Barksdale, aye; Daryl Sammet, aye; and LaDon Townsend, aye. Motion carries unanimously.

MOTION was made by Danny Barksdale and seconded by Daryl Sammet to approve a resolution providing for Limestone County’s participation in the July 15-17, 2022 “Back-To-School” sales tax holiday.

**RESOLUTION PROVIDING FOR LIMESTONE COUNTY’S
PARTICIPATION IN THE “BACK-TO-SCHOOL” SALES TAX HOLIDAY**

WHEREAS, during its 2006 Regular Session, the Alabama Legislature Enacted

**MINUTES, LIMESTONE COUNTY COMMISSION, APRIL 18, 2022
COMMISSION MEETING**

Act No. 2006-574, which provides an exemption of the state sales and use tax for certain non-commercial purchases related to school clothing and supplies during the first full weekend in August of each year; and

WHEREAS, Act No. 2017-120 Amended *Code of Alabama 1975*, §Sections 40-23-211 and 40-23-213, relating to the tax exemption on covered items during “Back-to-School” Sales Tax Holiday, by changing the dates from the first weekend of August to the third full weekend of July.

WHEREAS, the Limestone County Commission has affirmatively voted to grant the exemption of covered items from county sales and use taxes on purchases during the third full weekend of July, beginning at 12:01 a.m. on Friday, July 15, 2022 and ending at twelve midnight on Sunday, July 17, 2022, and

WHEREAS, the *Code of Alabama 1975*, §11-51-210(e) requires that the county commission notify the Alabama Department of Revenue of any new local tax or amendment to an existing local tax levy at least 30 days prior to the effective date of the change; and

WHEREAS, the exemption of certain county sales and use taxes for the third full weekend of July 2022 herein adopted by the county commission is an amendment to the county’s sales and use tax levy warranting notice to the Alabama Department of Revenue;

WHEREFORE BE IT RESOLVED BY THE LIMESTONE COUNTY COMMISSION that it does hereby provide for an exemption of the county sales and use tax on purchases of items covered by the Alabama Department of Revenue Sales and Use Tax Rules beginning at 12:01 a.m. on Friday, July 15, 2022, and ending at twelve midnight on Sunday, July 17, 2022.

BE IT FURTHER RESOLVED that a copy of this resolution be spread upon the minutes of the April 18, 2022 meeting of the Limestone County Commission and be immediately forwarded to the Alabama Department of Revenue in compliance with *Code of Alabama 1975*, § 11-51-210(e).

IN WITNESS WHEREOF, the Limestone County Commission has caused this Resolution to be executed in its name and on its behalf by its Chairman on this the 18th day of April 2022.

Collin Daly, Chairman

Attest: _____
Ellen Morell, Administrator

The Chairman asked if there was any discussion. There was no discussion. The Administrator called the roll. Danny Barksdale, aye; Daryl Sammet, aye; Jason Black, aye; and LaDon Townsend, aye. Motion carries unanimously.

**MINUTES, LIMESTONE COUNTY COMMISSION, APRIL 18, 2022
COMMISSION MEETING**

MOTION was made by Jason Black and seconded by Danny Barksdale to approve a resolution for expenditure of American Rescue Plan Act funds for direct administrative personnel costs.

**RESOLUTION FOR EXPENDITURE OF AMERICAN RESCUE PLAN ACT FUNDS
FOR DIRECT ADMINISTRATIVE PERSONNEL COSTS**

WHEREAS, Limestone County, Alabama (the "County") has received American Rescue Plan Act fiscal recovery funds ("ARPA funds") and is charged with ensuring that such funds are expended in accordance with state and federal law; and

WHEREAS, payment of the cost of payroll and covered benefits for employees to the extent the employee's time is spent on activities directly related to the administration of ARPA funds or ARPA funded projects (collectively, "the administration of ARPA funds") is an eligible use of ARPA funds; and

WHEREAS, the Limestone County Commission (the "Commission") has determined that appropriating ARPA funds for the cost of payroll and covered benefits for employees while engaging in activities directly related to the administration of ARPA funds is a necessary, eligible, and reasonable use of these funds.

NOW, THEREFORE, BE IT RESOLVED BY THE COMMISSION as follows:

1. The County shall use ARPA funds to cover the costs of payroll and covered benefits of employees, to the extent the employee's time is spent on activities directly related to the administration of ARPA funds.
2. The Chairman, Collin Daly, is hereby authorized to expend ARPA funds in accordance with the provisions of this Resolution for any and all costs of payroll and covered benefits of employees to the extent the employee's time was spent on activities directly related to the administration of ARPA funds for any pay period beginning on or after March 3, 2021, and ending on or before December 31, 2024.
3. Expenditure of these funds, as authorized by this Resolution, shall be contingent on the continued appropriation and availability of ARPA funds for this purpose and in no event shall be used for any time prior to March 3, 2021, or any pay period ending after December 31, 2024.

IN WITNESS WHEREOF, the Limestone County Commission has caused this Resolution to be executed in its name and on its behalf by its Chairman on the ___ day of _____, 2022.

Chairman, Limestone County Commission

Attest:

County Administrator

**MINUTES, LIMESTONE COUNTY COMMISSION, APRIL 18, 2022
COMMISSION MEETING**

The Chairman asked if there was any discussion. There was no discussion. The Administrator called the roll. Jason Black, aye; Danny Barksdale, aye; Daryl Sammet, aye; and LaDon Townsend, aye. Motion carries unanimously.

MOTION was made by LaDon Townsend and seconded by Jason Black to approve a resolution to authorize expenditure of American Rescue Plan Act funds for governmental services using revenue replacement funds.

**RESOLUTION TO AUTHORIZE EXPENDITURE OF AMERICAN RESCUE PLAN
ACT FUNDS FOR GOVERNMENTAL SERVICES USING REVENUE
REPLACEMENT FUNDS**

WHEREAS, Limestone County, Alabama (the "County") has received American Rescue Plan Act fiscal recovery funds ("ARPA funds") and is charged with ensuring that such funds are expended in accordance with state and federal law; and

WHEREAS, ARPA funds may be used for the provision of government services to the extent of the reduction of revenue experienced due to the COVID-19 public health emergency ("Revenue Replacement Funds"); and

WHEREAS, the Limestone County Commission (the "Commission") has determined that providing government services with Revenue Replacement funds is a necessary, eligible, and reasonable use of these funds.

NOW, THEREFORE, BE IT RESOLVED BY THE COMMISSION as follows:

- 1) The County shall use ARPA funds, up to the amount of Revenue Replacement Funds, to provide government services.
- 2) The Chairman, Collin Daly, is hereby authorized to expend ARPA funds in accordance with the provisions of this Resolution for any and all leave taken pursuant to the County's COVID-19 leave policy.
- 3) Revenue Replacement funds may not be allocated or expended for the following:
 - a. To pay interest or principal on outstanding debt (including fees or issuance costs associated with the issuance of new debt, and interest or charges for tax anticipation notes),
 - b. To replenish rainy day or other reserve funds,
 - c. To pay judgments or settlements,
 - d. As a non-federal match (where otherwise barred by federal law), or
 - e. As a deposit into a pension/retirement fund.
- 4) Expenditure of these funds, as authorized by this Resolution, shall be contingent on the continued appropriation and availability of ARPA funds for this purpose and in no event shall be used to cover the cost of providing government services for any quarter ending after December 31, 2024.

**MINUTES, LIMESTONE COUNTY COMMISSION, APRIL 18, 2022
COMMISSION MEETING**

IN WITNESS WHEREOF, the Limestone County Commission has caused this Resolution to be executed in its name and on its behalf by its Chairman on the ___ day of _____, 2022.

Chairman, Limestone County Commission

Attest:

County Administrator

The Chairman asked if there was any discussion. There was no discussion. The Administrator called the roll. LaDon Townsend, aye; Jason Black, aye; Daryl Sammet, aye; and Danny Barksdale, aye. Motion carries unanimously.

MOTION was made by Jason Black and seconded by Daryl Sammet to approve a resolution and agreement to grant a tax abatement for North Alabama Laserfab, Inc.

RESOLUTION

This resolution made this 18 day of April, 2022, (the Effective Date) by the Limestone County Commission (the Granting Authority), to grant a tax abatement for North Alabama Laserfab, Inc., (the Company).

WHEREAS, the Company has announced plans for a (check one):

new project or

major addition to their existing facility (the Project), located within the jurisdiction of the

Granting Authority; and

WHEREAS, pursuant to the Tax Incentive Reform Act of 1992 (Section 40-9B-1 et seq., Code of Alabama 1975) (the Act), the Company has requested from the Granting Authority an Abatement of (check all that apply):

all state and local non-educational property taxes,

all construction related transaction taxes, except those construction related transaction taxes levied for educational purposes or for capital improvements for education, and /or

all mortgage and recording taxes; and

WHEREAS, the Company has requested that the abatement of state and local non-educational property taxes (if applicable) be extended for a period of 10 years, in accordance with the Act; and

WHEREAS, the Granting Authority has considered the request of the Company and the completed applications (copy attached) filed with the Granting Authority by the Company, in connection with its request; and

WHEREAS, the Granting Authority has found the information contained in the Company's application to be sufficient to permit the Granting Authority to make a reasonable cost/benefit analysis of the proposed project and to determine the economic benefits to the community; and

WHEREAS, the construction of the project will involve a capital investment of \$803,000.00

**MINUTES, LIMESTONE COUNTY COMMISSION, APRIL 18, 2022
COMMISSION MEETING**

WHEREAS, the Company is duly qualified to do business in the State of Alabama, and has powers to enter into, and to perform and observe the agreements and covenants on its part contained in the Tax Abatement Agreement; and

WHEREAS, the Granting Authority represents and warrants to the Company that it has power under that constitution and laws of the State of Alabama (including particularly the provisions of the Act) to carry out provisions of the Tax Abatement Agreement;

NOW THEREFORE, be it resolved by the Granting Authority as follows:

Section 1. Approval is hereby given to the application of the Company and abatement is hereby granted of (check all that apply):

- all state and local non-educational property taxes,
- all construction related transaction taxes, except those construction related transaction taxes levied for educational purposes or for capital improvements for education, and /or
- all mortgage and recording taxes

as the same may apply to the fullest extent permitted by the Act. The period of abatement for the non-educational property taxes (if applicable) shall extend for a period of 10 years measured as provided in Section 40-9B-3(a)(12) of the Act.

Section 2. The governing body of the Granting Authority is authorized to enter into an abatement agreement with the Company to provide for the abatement granted in Section 1.

Section 3. A certified copy of this resolution, with the application and abatement agreement, shall be forwarded to the Company to deliver to the appropriate local taxing authorities (if applicable) and to the Alabama Department of Revenue in accordance with the Act.

Section 4. The governing body of the Granting Authority is authorized to take any and all actions necessary or desirable to accomplish the purpose of the foregoing of this resolution.

I hereby certify that the above and foregoing was duly adopted by the Limestone County Commission at a meeting held on the 18 day of April, 2022.

Collin Daly, Chairman

ATTEST:

Ellen Morell, Administrator

Tax Abetment Agreement

This Abatement Agreement is made this 18 day of April, 2022. (the Effective Date) by and between the Limestone County Commission (the Granting Authority),
(City, County, or Industrial Development Board)

And North Alabama Laserfab, Inc (the Company), its successors and assigns.

WHEREAS, the Company's North American Industry Classification System (NAICS) Code, 333517, meets the qualifications of an industrial or research enterprise in accordance with Section 40-9B-3(10),

**MINUTES, LIMESTONE COUNTY COMMISSION, APRIL 18, 2022
COMMISSION MEETING**

Code of Alabama 1975, as amended.

WHEREAS, the Company has announced plans for a (check one):

- new project or major addition to their existing facility (the Project), located within the jurisdiction of the Granting authority; and

WHEREAS, the Project is estimated to be completed by the 18 day of April, 2022; and

WHEREAS, the Project will be located in the County of Limestone (check whichever is applicable)

- inside the city limits of Athens.
- inside the police jurisdiction of _____,
- outside the city limits and police jurisdiction of the City of Lester, AL; and

WHEREAS, pursuant to the Tax Incentive Reform Act of 1992 (Section 40-9B-1 et seq., **Code of Alabama 1975**) (the Act), the Company has requested from the Granting Authority an Abatement of (check all that apply):

- all state and local non-educational property taxes,
- all construction related transaction taxes, except those construction related transaction taxes levied for educational purposes or for capital improvements for education, and/or
- all mortgage and recording taxes; and

WHEREAS, the Granting Authority has considered the request of the Company and the completed applications filed with the Granting Authority by the Company, in connection with its request; and

WHEREAS, the Granting Authority has found the information contained in the Company's application to be sufficient to permit the Granting Authority to make a reasonable cost/benefit analysis of the proposed project and to determine the economic benefits to the community; and

WHEREAS, at its meeting held on the 18 day of April, 2022 (the Meeting), the Granting Authority approved the Company's application for abatement of (check all that apply):

- all state and local non-educational property taxes,
- all construction related transaction taxes, except those local construction related transaction taxes levied for educational purposes or for capital improvements for education, and/or
- all mortgage and recording taxes; and,

WHEREAS, the Project will consist of private use industrial development property, which is composed of all real and related personal property to be acquired, constructed, and installed thereon, as described in Attachment One hereto; and

WHEREAS, the private use industrial development property for which the abatement is applied shall be (check whichever is applicable)

- owned by the entity applying for the abatement
- leased from a public authority, municipal, or county government; and

WHEREAS, in the event that the private use industrial development property is leased from a public authority, municipal, or county government, the lessee shall be treated as the owner of such property for federal income tax purposes; and

WHEREAS, it shall be indicated whether the Granting Authority intends to issue bonds in connection with the private use industrial development property herein described, and, if so intends, shall attach a copy of the inducement agreement; and

WHEREAS, for the purposes of abatement of all non-educational property taxes (If applicable) it has

MINUTES, LIMESTONE COUNTY COMMISSION, APRIL 18, 2022
COMMISSION MEETING

been determined that no portion of the Project has been placed in service or operation by the Company or by a related party, as defined in 26 U. S. C. S267, with respect to the Company prior to the Effective Date of this Agreement; and

WHEREAS, for the purposes of the abatement of all construction related transaction taxes (if applicable), no portion of the Project which has been requested for abatement has been purchased prior to the Effective Date of this Agreement; and

WHEREAS, the Project conducts trade or business as described in the 2007 North American Classification System, promulgated by the Executive Office of the President of the United States, Office of Management and Budget, Sectors 31 (other than National Industry 311811), 32, 33; Subsectors 423, 424, 511, and 927; Industry Groups 5417, 5415, and 5182 (without regard to the premise that data processing and related services be performed in conjunction with a third party); Industries 11331 and 48691; and National Industries 115111, 517110, 541380, and 561422 (other than establishments that originate telephone calls) and includes such trades and businesses as may be hereafter reclassified in any subsequent publication of the North American Industry Classification System or other industry classification system developed in conjunction with the United States Department of Commerce, or any process or treatment facility which recycles, reclaims, or converts any materials, which include solids, liquids, or gases, to a reusable product; and

WHEREAS, if the Project is a major addition to an existing facility, the request for abatement of all state and local non-educational property taxes (if applicable) and/or all construction related transaction taxes (if applicable) do not include any capitalized repairs, rebuilds, maintenance, replacement equipment, or costs associated with the renovating or remodeling of existing facilities of industrial development property previously placed in service by the Company; and

WHEREAS, if the Project is a major addition to an existing facility the addition equals the lesser of (i) thirty (30) percent of the original cost of the industrial development property, or (ii) \$2,000,000; and

WHEREAS, the Company is duly qualified to do business in the State of Alabama, and has powers to enter into, and to perform and observe the agreements and covenants on its part contained in this Agreement; and

WHEREAS, the Granting Authority represents and warrants to the Company (a) that it has power under that constitution and laws of the State of Alabama (including particularly the provisions of the Act) to carry out provisions of this Agreement, (b) that the execution of this Agreement on its behalf has been duly authorized by resolution adopted by the governing body of the Granting Authority;

NOW, THEREFORE, the Granting Authority and the Company, in consideration of the mutual promises and benefits specified herein, hereby agree as follows:

1. In accordance with the Act, the Granting Authority hereby grants to the Company an abatement from liability for the following taxes as permitted by the Act (check all that apply):

- (a) Non-educational Property Taxes: all property taxes that are not required to be used for educational purposes or for capital improvements for education;
- (b) Construction Related Transaction Taxes: the transaction taxes imposed by Chapter 23 of Title 40 of the Code of Alabama 1975 on the tangible personal property and taxable services to be incorporated into the Project, this cost of which may be added to capital account with respect to the Project, except for those local construction related transaction taxes levied for educational purposes or for capital improvements for education;
- (c) Mortgage and Recording Taxes: all taxes imposed by Chapter 22 of Title 40 of the Code of Alabama 1975 relating to mortgages, deeds, and documents relating to issuing or securing obligations and conveying title into or out of the Granting Authority with respect to the Project.

2. An estimate of the amount of tax abated pursuant to this Agreement is set forth below. The Granting Authority and the Company hereby acknowledge that this estimate reflects the amount of tax abated for the period stated, under current law, and that the actual abatement for such taxes may be for a

**MINUTES, LIMESTONE COUNTY COMMISSION, APRIL 18, 2022
COMMISSION MEETING**

greater or lesser amount depending upon the actual amount of such taxes levied during the abatement period as stated, (check all that apply)

- If no bonds are to be issued, non-educational property taxes are expected to be approximately \$2011.60 per year and the maximum period for such abatement shall be valid for a period for 10 years, beginning with the October 1 lien date next proceeding the acquisition date of abated property.
- (b) If bonds are issued, non-educational property taxes are expected to be approximately \$ _____ per year and the maximum period for such abatement shall be valid for a period of ____ years, beginning the initial date bonds are issued to finance project.
- (c) Construction related transaction taxes, except those construction related transaction taxes levied for educational purposes or for capital improvements for education, are expected to be approximately \$12,245.00 and such abatement shall not extend beyond the date the Project is placed in service.

£7 (d) Mortgage and recording taxes are expected to be approximately \$ _____ .

3. The Company hereby makes the following good faith projections:

- (a) Amount to be invested in the Project \$803,000.
- (b) Number of individuals to be employed initially at the Project and in each of the succeeding three years:
Initially 0 Year 1 5 Year 2 3 Year 3 2;
- (c) Annual payroll initially at the Project and in each of the succeeding three years;
Initially \$0 Year 1 \$175,000 Year 2 \$105,000 Year 3 \$80,000;

4. The Company shall file with the Alabama Department of Revenue within 90 days after the date of the Meeting a copy of this agreement as required by Section 40-9B-6(c) of the Act.

GENERALLY

5. Compliance. If the Company fails to comply with any provision in this Agreement or if any of the material statements contained herein or in Attachment Two (Note: This attachment shall include the application for abatement), are determined to have been misrepresented whether intentionally, negligently, or otherwise, the Granting Authority shall terminate this Agreement and take such equitable action available to it as if this Agreement had never existed. If it is determined that certain items, which are identified on the application form for abatement of taxes, are not in compliance with the Act or governing regulations, these items may be subject to taxation for all local and state taxing authorities.

6. Binding Agreement. Each party to this Agreement hereby represents and warrants that the person executing this Agreement on behalf of the party is authorized to do so and that this Agreement shall be binding and enforceable when duly executed and delivered by each party. This Agreement shall be binding upon and inure to the benefit of each of the parties and their respective successors.

7. Limitations. Notwithstanding any provision contained herein to the contrary, this Agreement is limited solely to the abatement of (check all that apply).

- all state and local non-educational property taxes,
- all construction related transaction taxes, except those construction related transaction taxes levied for educational purposes or for capital improvements for education, and/or
- all mortgage and recording taxes fees for the periods specified herein. Nothing in this Agreement shall be construed as a waiver by the Company of any greater benefits that the Project or any portion thereof may have available under provisions of the law other than the Act.

MINUTES, LIMESTONE COUNTY COMMISSION, APRIL 18, 2022 COMMISSION MEETING

8. Severability. This Agreement may be amended or terminated upon mutual consent of the Company and the Granting Authority. Any such amendment or termination shall not in any matter affect the rights and duties by and between the Company and the Granting Authority.

This Agreement is executed as of the dates specified below.

North Alabama Laserfab, Inc.
(the Company)

The Limestone County Commission
(the Granting Authority)

By: _____

By: _____

Name: Greg Weatherford

Name: Collin Daly

Title: Owner

Title: Chairman

Date: April 18, 2022

Date: April 18, 2022

INFORMATION SHEET FOR TAX ANALYSIS

Prepared by the Alabama Department of Revenue, Office of Economic

Development Date Prepared: 4/11/2022

USER INPUTS ARE IN BLUE ON THE SCREEN

Project name **PROJECT NORTH AL LASERFAB Revised**

Location: **Unincorporated, Limestone County, Alabama**

Criteria:

PROJECT CRITERIA: Total project costs are \$803,000, per Bethany Shockney with the Limestone County Economic Development Association. Project costs consist of: Land - \$0; Building - \$40,000; Manufacturing Equipment - \$763,000; Nonmanufacturing Equipment - \$0; and other costs - \$0

Project Cost or Investment Figures

Existing Real Property			\$0
Cost of New Land			\$0
	<i> Value of Donated Land</i>	\$0	
Cost of Land Improvements/infrastructure			\$0
Full Cost of New Buildings			\$40,000
% of building cost for materials for sales tax	50.00%	\$20,000	
Total Real Property Costs			\$40,000
Total Real Property Value for Property Tax (costs + donated land)			\$40,000
Manufacturing Equipment (12-year life)			
	New manufacturing equipment		\$763,000
	<i> Item 2</i>		\$0
Manufacturing Equipment (3-year life)			
	<i> Molds, Dies, Jigs & related tooling</i>		\$0
Manufacturing Equipment costs not subject to sales and use tax			
	<i>Transferred/used equipment</i>	\$0	
	<i>Installation labor</i>	\$0	
	Total owned/used manufacturing eqpt.		\$0
Total Manufacturing Equipment Costs			\$763,000
Nonmanufacturing Equipment (10-year life)			
	New nonmanufacturing equipment		\$0
	<i> Item 2</i>		\$0
	<i> Item 3</i>		\$0
Nonmanufacturing Equipment costs not subject to sales and use tax			
	<i>Transferred/used equipment</i>	\$0	
	<i>Installation labor</i>	\$0	
	Total owned/used nonmanufacturing eqpt.		\$0
Computer Equipment (3-year life)			\$0
Total Nonmanufacturing Equipment Costs			\$0
Vehicles (assessed per state manual)			\$0
Pollution Control Equipment (exempt from sales & use taxes and property taxes)			\$0

**MINUTES, LIMESTONE COUNTY COMMISSION, APRIL 18, 2022
COMMISSION MEETING**

<i>Other Labor & Miscellaneous Costs (not taxed for sales tax & not part of property tax value)</i>	\$0
TOTAL REAL & PERSONAL PROPERTY INVESTMENT	\$803,000

		General	Educ Part	Mfg. Mach.	Educ Part
State	Alabama	4.000%	0.000%	1.500%	0.000%
County	Limestone County	2.000%	2.000%	1.000%	1.000%
City	Unincorporated	0.000%	0.000%	0.000%	0.000%
TOTAL	all jurisdictions	6.000%	2.000%	2.500%	1.000%

		Total		Educ/Nonabated Part	
State	Alabama	0.0065		0.0030	
County	Limestone County	0.0235	local total	0.0100	local total
City	Unincorporated	0.0000	0.0235	0.0000	0.0100
TOTAL	all jurisdictions	0.0300		0.0130	

The Chairman asked if there was any discussion. Commissioner Black commented that he was happy to be able to help a small business owner which is located in a rural area, and Chairman Daly stated that "it is always good to see someone local doing well." The Administrator called the roll. Jason Black, aye; Daryl Sammet, aye; Danny Barksdale, aye; and LaDon Townsend, aye. Motion carries unanimously.

MOTION was made by Daryl Sammet and seconded by Danny Barksdale to approve a yearly service contract with Rapiscan for the Courthouse's security scanner in the amount of \$4,620.00.



Service Contract Quote

Service Plan Type 8X5
 Contract No. CS007534
 Accept Before 05/11/22
 Starting Date 06/01/22
 Expiration Date 05/31/23
 Invoice Period Year
 Next Invoice Date 06/01/22
 Annual Amount 4,620.00

Rapiscan Systems Inc
 2805 Columbia Street
 Torrance, California 90503

Phone No. +1 310-978-1457
 Fax No. +1 310-349-2492

Buyer
 Limestone County Commission
 310 West Washington Street
 ATHENS, AL 35611 United States of America

Invoice-to
 Limestone County Commission
 310 West Washington Street
 ATHENS, AL 35611 United States of America

Buyer Address
 Limestone County Commission
 310 W. Washington St.
 Athens, AL 35611 United States of America

Phone No. E-Mail

Service Item No.	Description	Item No.	Serial No.	Measure	Time (Hour Period)	Unit of Response	Service	Line Value
FSI01310	RAPISCAN 618XRW, WBS, D 618XRW14	7151810	MTR	48	1Y			4,620.00

The Chairman asked if there was any discussion. There was no discussion. The Administrator called the roll. Daryl Sammet, aye; Danny Barksdale, aye; Jason Black, aye; and LaDon Townsend, aye. Motion carries unanimously.

**MINUTES, LIMESTONE COUNTY COMMISSION, APRIL 18, 2022
COMMISSION MEETING**

MOTION was made by Danny Barksdale and seconded by LaDon Townsend to approve the following budget revisions:

Department	Account Number	Title of Line Item	Amount
Engineering	112-53600-560	Construction Equipment	+ \$621,897.00
	112-61200	Proceeds from Sale Fixed Assets	- \$210,000.00
	112-35910	Budgetary Fund Balance	- \$411,879.00

The Chairman asked if there was any discussion. There was no discussion. The Administrator called the roll. Danny Barksdale, aye; LaDon Townsend, aye; Daryl Sammet, aye; and Jason Black, aye. Motion carries unanimously.

MOTION was made by LaDon Townsend and seconded by Jason Black to award the following bids:

Proposal No.	Item	Awarded to	Amount
2788	Printing Kraft Envelopes – License Commission	Decatur Printing Solutions	\$1,237.50
2789	Printing Business Cards – License Commission	Printers and Stationers, Inc.	\$997.00
2790	Concrete Round & Arched Pipe – Picked up and Delivered	NO BID	
2791	Liquid Asphalt	Ergon Asphalt & Emulsions, Inc.	See Attached

**PROPOSAL NO. 2791
TABULATION OF BID**

Opening Date: April 14, 2022

Awarding Date: April 18, 2022

Liquid Asphalt

<u>Price Per Gallon</u>	EF-1H CF-1h (no longer made) Emulsion	CMS-1pf Emulsion	CMS-1pc Emulsion
Ergon Asphalt & Emulsions, Inc. Attn: Anthony Quattlebaum 7890 Birmingham Road Mulga, AL 35118 <i>Facility Location: Mulga, AL</i> anthony.quattlebaum@ergon.com	\$1.78 DEL \$1.58 PU	NO BID	\$3.60 DEL \$3.40 PU

**MINUTES, LIMESTONE COUNTY COMMISSION, APRIL 18, 2022
COMMISSION MEETING**

The Chairman asked if there was any discussion. Commissioner Sammet inquired as to the location of Mulga, AL. The Administrator called the roll. LaDon Townsend, aye; Jason Black, aye; Daryl Sammet, aye; and Danny Barksdale, aye. Motion carries unanimously.

MOTION was made by Jason Black and seconded by LaDon Townsend to approve 1 through 3:

1. Hire Stuart Fontenot as Corrections Officer, effective April 18, 2022.

2. Hire Jacolby Moore as Corrections Officer, effective April 18, 2022.

3. Hire Shelby Defoe as Corrections Officer, effective April 18, 2022.

The Chairman asked if there was any discussion. There was no discussion. The Administrator called the roll. Jason Black, aye; LaDon Townsend, aye; Daryl Sammet, aye; and Danny Barksdale, aye. Motion carries unanimously.

MOTION was made by Daryl Sammet and seconded by LaDon Townsend to approve to hire Andrew Teeples as Deputy Coroner.

The Chairman asked if there was any discussion. There was no discussion. The Administrator called the roll. Daryl Sammet, aye; LaDon Townsend, aye; Danny Barksdale, aye; and LaDon Townsend, aye. Motion carries unanimously.

MOTION was made by Jason Black and seconded by Daryl Sammet to approve to hire Roger Alan Martin as a Part-Time Deputy (Courthouse Security), pending drug screening.

The Chairman asked if there was any discussion. There was no discussion. The Administrator called the roll. Jason Black, aye; Daryl Sammet, aye; Danny Barksdale, aye; and LaDon Townsend, aye. Motion carries unanimously.

MOTION was made by LaDon Townsend and seconded by Jason Black to approve to transfer Joseph Linginfelter from Jail Corporal to Jail Sergeant, effective April 18, 2022.

The Chairman asked if there was any discussion. There was no discussion. The Administrator called the roll. LaDon Townsend, aye; Jason Black, aye; Daryl Sammet, aye; and Danny Barksdale, aye. Motion carries unanimously.

MOTION was made by Daryl Sammet and seconded by Danny Barksdale to approve to transfer William Keith Chandler from Corrections Officer to Jail Corporal, effective April 18, 2022.

The Chairman asked if there was any discussion. There was no discussion. The Administrator called the roll. Daryl Sammet, aye; Danny Barksdale, aye; Jason Black, aye; and LaDon Townsend, aye. Motion carries unanimously.

**MINUTES, LIMESTONE COUNTY COMMISSION, APRIL 18, 2022
COMMISSION MEETING**

MOTION was made by Jason Black and seconded by Daryl Sammet to approve the following merit increases, which are included in the base pay and cost of living pay as listed below.

Name	Position	Effective Date
Brian Coleman	Bridge Inspector III	5/5/2022
George Hamby	Equipment Operator III	5/8/2022
Hugh Watson	Sign/Herbicide Technician	5/7/2022
Hunter Gatlin	Equipment Operator II	5/20/2022
Jonathan Yerdon	Director I.T.	5/13/2022
Joseph Mears	Equipment Operator III	5/6/2022
Sharon Wilson	Engineering Support Assistant	5/17/2022
Travis Austiell	Equipment Operator II	5/13/2022
Vicky Marbery	Building Service Worker	5/16/2022
Quentin Wise	Equipment Operator III	5/7/2022

The Chairman asked if there was any discussion. There was no discussion. The Administrator called the roll. Jason Black, aye; Daryl Sammet, aye; Danny Barksdale, aye; and LaDon Townsend, aye. Motion carries unanimously.

MOTION was made by Jason Black and seconded by LaDon Townsend to approve the following subdivisions:

Name	S/D Type	Approval Type	Lots	District	Location
Thomas Elmore Subdivision – replat Tracts 13 and 14	Minor	Preliminary & Final	4	4	Approximately ½ mile north of Poff Ln & Sewell Rd intersection
Morris Williams Subdivision - replat Lot 11	Minor	Preliminary & Final	3	4	East side at the end of Blackburn Lane
Owens Property Subdivision	Major	Preliminary	49	2	West side of Mooresville Rd
Kennesaw Creek Subdivision, Phase 3	Major	Preliminary	87	2	Approximately 1900' west of Jones Rd on the south side of Nick Davis Rd

The Chairman asked if there was any discussion. There was no discussion. The Administrator called the roll. Jason Black, aye; LaDon Townsend, aye; Daryl Sammet, aye; and Danny Barksdale, aye. Motion carries unanimously.

MOTION was made by Danny Barksdale and seconded by LaDon Townsend to amend the staffing plan to add two part-time deputies. Said positions are to be paid through the Sheriff's Law Enforcement Fund.

**MINUTES, LIMESTONE COUNTY COMMISSION, APRIL 18, 2022
COMMISSION MEETING**

The Chairman asked if there was any discussion. There was no discussion. The Administrator called the roll. Danny Barksdale, aye; LaDon Townsend, aye; Daryl Sammet, aye; and Jason Black, aye. Motion carries unanimously.

MOTION was made by Jason Black and seconded by Danny Barksdale to approve Information Systems Security Officer job description and amend the staffing plan to remove Network Support Specialist II under the I.T. Department.



Information Systems Security Officer
IT/
Information Technology

JOB SUMMARY

This position performs specialized duties to provide network and systems security and support for the installation, analysis, and maintenance of the Limestone County Commission local area network (LAN), wide area network (WAN), internet/intranet sites, wireless network, and other networks. Duties will also include creating and modifying policies and procedures, maintaining audit and security compliance, and tracking risk mitigation and remediation.

MAJOR DUTIES

- Researches, develops, tests, reviews, and implements information assurance and security controls in order to ensure confidentiality, integrity, and availability of systems and data.
- Acts as a liaison with internal & external entities.
- Develops information security policies and procedures in accordance with internal or external standards and regulations.
- Maintains security, risk management, and disaster recovery documentation.
- Utilizes security information and event management (SIEM) to monitor/investigate events.

**MINUTES, LIMESTONE COUNTY COMMISSION, APRIL 18, 2022
COMMISSION MEETING**

- Provides daily hardware and software support to all County employees.
- Responds to after-hours hardware, software, or network issues when on-call.
- Assists in the planning and implementation of special projects for County departments.
- Assists in maintaining vehicle location systems in patrol cars.
- Reviews and authorizes the installation of software by user departments.
- Researches and makes recommendations regarding the replacement or upgrading of equipment.
- Performs related duties.

KNOWLEDGE REQUIRED BY THE POSITION

- Working knowledge of TCP/IP.
- Knowledge of industry best practices and methods of application.
- Knowledge of hardware, software, and network configuration and diagnostic principles.
- Knowledge of Windows, Linux, MacOS operating systems.
- Knowledge of certificates and VPN technologies.
- Skill in troubleshooting and resolving computer hardware, software, and network problems.
- Skill in problem solving.
- Skill in prioritizing and planning.
- Skill in interpersonal relations.
- Skill in oral and written communication.

SUPERVISORY CONTROLS

The IT Director assigns work in terms of very general instructions. The supervisor spot-checks completed work for compliance with procedures and the nature and propriety of the final results.

MINUTES, LIMESTONE COUNTY COMMISSION, APRIL 18, 2022

COMMISSION MEETING

GUIDELINES

Guidelines include industry best practices; manufacturer installation, operations and repair manuals; and department and County policies and procedures. These guidelines require judgment, selection, and interpretation in application.

COMPLEXITY/SCOPE OF WORK

- The work consists of varied specialized duties. Frequent changes to industry standards contribute to the complexity of the position.
- The purpose of this position is to provide specialized support for the County's computer network and related components. Successful performance contributes to the efficiency and effectiveness of a variety of County operations.

CONTACTS

- Contacts are typically with coworkers, other county personnel, vendors, and the general public.
- Contacts are typically to exchange information, resolve problems, and provide services.

PHYSICAL DEMANDS/ WORK ENVIRONMENT

- The work is typically performed while intermittently sitting, standing, bending, crouching, or stooping. The employee frequently lifts light and heavy objects, climbs ladders, uses tools or equipment requiring a high degree of dexterity, distinguishes between shades of color, and utilizes the sense of smell.
- The work is typically performed in an office, computer room, or outdoors, occasionally in cold or inclement weather. The employee is exposed to noise, dust, dirt, grease, and machinery with moving parts. Work occasionally requires the use of protective devices such as masks, goggles, gloves, etc.

SUPERVISORY AND MANAGEMENT RESPONSIBILITY

None.

MINIMUM QUALIFICATIONS

- Knowledge and level of competency commonly associated with the completion of a baccalaureate degree in a course of study related to the occupational field.
- Experience sufficient to thoroughly understand security responsibilities in the information technology field, answer questions, and resolve problems.

**MINUTES, LIMESTONE COUNTY COMMISSION, APRIL 18, 2022
COMMISSION MEETING**

- Possession of or ability to readily obtain a valid driver's license issued by the State of Alabama for the type of vehicle or equipment operated.

The Chairman asked if there was any discussion. There was no discussion. The Administrator called the roll Jason Black, aye; Danny Barksdale, aye; Daryl Sammet, aye; and LaDon Townsend, aye. Motion carries unanimously.

MOTION was made by Danny Barksdale and seconded by Jason Black to approve new job descriptions for the Engineering Department.



Equipment Operator I

ENG-SC/01

Engineering – Stripe Crew

JOB SUMMARY

This position operates assigned equipment in the maintenance and repair of county roads and related infrastructure.

Under the supervision of the County Engineer, the employee operates various types of heavy equipment in the completion of highly complex and difficult construction and maintenance activities on County roads. Work involves physical placement of traffic striping, legends, and markings as required throughout the County per MUTCD standards. Work also involves assisting with routine maintenance of traffic signals and devices throughout the County, performing complex traffic control operations and assisting the sign, paving/mowing and signal crews as needed. This job is considered safety-sensitive and is subject to a pre-employment background check and random drug screens.

MAJOR DUTIES

- Operates specialized paint equipment to place traffic markings.
- Operates raised pavement marking trailer to install pavement markers.
- Operates bucket truck with aerial lift to repair traffic signal lights if needed.
- Willing to assist with sign and signal crews as needed.

**MINUTES, LIMESTONE COUNTY COMMISSION, APRIL 18, 2022
COMMISSION MEETING**

- Willing to respond to callouts when deemed necessary by Supervisor.
- May advise Supervisor on capabilities and best utilization of assigned equipment.
- Performs daily and monthly safety and maintenance vehicle inspections on assigned equipment.
- Performs preventative maintenance on equipment; checks tires, oil, fluid levels, and lights.
- Monitors gauges and other indicators during equipment operation for non-standard conditions.
- While equipment is being operated makes adjustments to insure proper pressures for painting.
- Ensures assigned equipment is fueled.
- Reports equipment maintenance status to the Supervisor.
- Performs work or may assist mechanic or other repairmen with mechanical repairs.
- Ensures the proper signage is visible while equipment is in or near roadway.
- Performs flagman duties, as needed, while on road maintenance jobs.
- Assists with project surveys.
- Maintains timecard.
- Generates daily reports of work completed.
- Performs other duties as assigned.

KNOWLEDGE REQUIRED BY THE POSITION

- Knowledge of County rules, regulations, policies, and procedures. (Can be acquired on the job.)
- Knowledge of County road and bridge systems. (Can be acquired on the job.)
- Knowledge of safety rules including accident causation and prevention.
- Knowledge of traffic regulations.

MINUTES, LIMESTONE COUNTY COMMISSION, APRIL 18, 2022 COMMISSION MEETING

- Basic knowledge of practices applied in the use of a wide variety of heavy equipment for various maintenance and construction operations.
- Basic skill level in the operation of equipment assigned to permit utilization of equipment capability; skill in operation of a wide variety of heavy equipment.
- Reading skills to comprehend operator manuals, directives, procedures, and instructions.
- Verbal skills to communicate effectively with supervisor and co-workers.
- Writing skills to clearly and neatly complete routine forms and records.
- Math skills to perform basic calculations (add, subtract, multiply, and divide.)
- Ability to use measuring instruments and to read equipment gauges.
- Ability to read and understand engineering drawings.
- Ability to read maps.
- Ability to work well with co-workers.
- Ability to work independently with minimal supervision.
- Ability to work under extreme weather conditions.
- Ability to move/lift objects greater than 50 lbs.
- Ability to train other operators.
- Ability to wear and utilize safety equipment, as required.
- Ability to drive and safely operate equipment.

SUPERVISORY CONTROLS

The County Engineer and/or the Assistant County Engineer assigns work in terms of general instructions. The supervisor spot-checks completed work for compliance with procedures, accuracy, and the nature and propriety of the final results.

GUIDELINES

Guidelines include traffic laws, work safety policies, ALDOT regulations, Manual of Uniform Traffic Control Devices (MUTCD), and county policies and procedures. These

MINUTES, LIMESTONE COUNTY COMMISSION, APRIL 18, 2022 COMMISSION MEETING

guidelines are generally clear and specific but may require some interpretation in application.

COMPLEXITY/SCOPE OF WORK

- The work consists of related heavy equipment operation and maintenance duties. Inclement weather and heavy traffic contribute to the complexity of the position.
- The purpose of this position is to operate heavy equipment in the maintenance and repair of county roads, bridges, and related infrastructure. Successful performance contributes to the provision of safe and well-maintained county roadways.

CONTACTS

- Contacts are typically with coworkers, other county employees, contractors, vendors, utility companies, construction companies, and the general public.
- Contacts are typically to exchange information, resolve problems, and provide services.

PHYSICAL DEMANDS/ WORK ENVIRONMENT

- The work is typically performed while intermittently sitting, standing, bending, crouching, stooping, or crawling in restricted areas. The employee frequently lifts light and heavy objects over 50 lbs., climbs tall ladders, uses tools or equipment requiring a high degree of dexterity, distinguishes between shades of color, and utilizes the sense of smell.
- The work is typically performed outdoors, occasionally in cold or inclement weather. The employee is exposed to dust, dirt, grease, and machinery with moving parts. The work involves high risks with exposure to potentially dangerous situations or unusual environmental stress which require a range of safety and other precautions, e.g., working at great heights under extreme weather conditions or similar situations where conditions cannot be controlled. The work requires the use of protective devices such as masks, goggles, gloves, etc.

SUPERVISORY AND MANAGEMENT RESPONSIBILITY

None.

MINIMUM QUALIFICATIONS

- Knowledge and level of competency commonly associated with completion of specialized training in the field of work, in addition to basic skills typically associated with a high school education.

**MINUTES, LIMESTONE COUNTY COMMISSION, APRIL 18, 2022
COMMISSION MEETING**

- Sufficient experience to understand the basic principles relevant to the major duties of the position, usually associated with the completion of an apprenticeship/internship or having had a similar position for one to two years.
- Possesses a current and valid Alabama Driver's License (Commercial Driver's License required for promotion); must be insurable.
- Ability to work overtime, weekends, or emergencies as needed.
- Ability to be on-call.
- Ability to pass a pre-employment background check and drug screen(s).



Equipment Operator II

ENG-SC/02

Engineering – Stripe Crew

JOB SUMMARY

This position operates assigned equipment in the maintenance and repair of county roads and related infrastructure.

Under the supervision of the County Engineer, the employee operates various types of heavy equipment in the completion of highly complex and difficult construction and maintenance activities on County roads. Work involves physical placement of traffic striping, legends, and markings as required throughout the County per MUTCD standards. Work also involves assisting with routine maintenance of traffic signals and devices throughout the County, performing complex traffic control operations and assisting the sign, paving/mowing and signal crews as needed. This job is considered safety-sensitive and is subject to a pre-employment background check and random drug screens.

MAJOR DUTIES

- Operates specialized paint equipment to place traffic markings.
- Operates raised pavement marking trailer to install pavement markers.
- Operates bucket truck with aerial lift to repair traffic signal lights if needed.

**MINUTES, LIMESTONE COUNTY COMMISSION, APRIL 18, 2022
COMMISSION MEETING**

- Willing to assist with sign and signal crews as needed.
- Willing to respond to callouts when deemed necessary by Supervisor.
- May advise Supervisor on capabilities and best utilization of assigned equipment.
- Performs daily and monthly safety and maintenance vehicle inspections on assigned equipment.
- Performs preventative maintenance on equipment; checks tires, oil, fluid levels, and lights.
- Monitors gauges and other indicators during equipment operation for non-standard conditions.
- While equipment is being operated makes adjustments to insure proper pressures for painting.
- Ensures assigned equipment is fueled.
- Reports equipment maintenance status to the Supervisor.
- Performs work or may assist mechanic or other repairmen with mechanical repairs.
- Ensures the proper signage is visible while equipment is in or near roadway.
- Performs flagman duties, as needed, while on road maintenance jobs.
- Assists with project surveys.
- Maintains timecard.
- Generates daily reports of work completed.
- Performs other duties as assigned.

KNOWLEDGE REQUIRED BY THE POSITION

- Knowledge of County rules, regulations, policies, and procedures. (Can be acquired on the job.)
- Knowledge of County road and bridge systems. (Can be acquired on the job.)
- Knowledge of safety rules including accident causation and prevention.

**MINUTES, LIMESTONE COUNTY COMMISSION, APRIL 18, 2022
COMMISSION MEETING**

- Knowledge of traffic regulations.
- Moderate knowledge of practices applied in the use of a wide variety of heavy equipment for various maintenance and construction operations.
- Moderate skill level in the operation of equipment assigned to permit utilization of equipment capability; skill in operation of a wide variety of heavy equipment.
- Reading skills to comprehend operator manuals, directives, procedures, and instructions.
- Verbal skills to communicate effectively with supervisor and co-workers.
- Writing skills to clearly and neatly complete routine forms and records.
- Math skills to perform basic calculations (add, subtract, multiply, and divide.)
- Ability to use measuring instruments and to read equipment gauges.
- Ability to read and understand engineering drawings.
- Ability to read maps.
- Ability to work well with co-workers.
- Ability to work independently with minimal supervision.
- Ability to work under extreme weather conditions.
- Ability to move/lift objects greater than 50 lbs.
- Ability to train other operators.
- Ability to wear and utilize safety equipment, as required.
- Ability to drive and safely operate equipment.

SUPERVISORY CONTROLS

The County Engineer and/or the Assistant County Engineer assigns work in terms of general instructions. The supervisor spot-checks completed work for compliance with procedures, accuracy, and the nature and propriety of the final results.

MINUTES, LIMESTONE COUNTY COMMISSION, APRIL 18, 2022

COMMISSION MEETING

GUIDELINES

Guidelines include traffic laws, work safety policies, ALDOT regulations, Manual of Uniform Traffic Control Devices (MUTCD), and county policies and procedures. These guidelines are generally clear and specific but may require some interpretation in application.

COMPLEXITY/SCOPE OF WORK

- The work consists of related heavy equipment operation and maintenance duties. Inclement weather and heavy traffic contribute to the complexity of the position.
- The purpose of this position is to operate heavy equipment in the maintenance and repair of county roads, bridges, and related infrastructure. Successful performance contributes to the provision of safe and well-maintained county roadways.

CONTACTS

- Contacts are typically with coworkers, other county employees, contractors, vendors, utility companies, construction companies, and the general public.
- Contacts are typically to exchange information, resolve problems, and provide services.

PHYSICAL DEMANDS/ WORK ENVIRONMENT

- The work is typically performed while intermittently sitting, standing, bending, crouching, stooping, or crawling in restricted areas. The employee frequently lifts light and heavy objects over 50 lbs., climbs tall ladders, uses tools or equipment requiring a high degree of dexterity, distinguishes between shades of color, and utilizes the sense of smell.
- The work is typically performed outdoors, occasionally in cold or inclement weather. The employee is exposed to dust, dirt, grease, and machinery with moving parts. The work involves high risks with exposure to potentially dangerous situations or unusual environmental stress which require a range of safety and other precautions, e.g., working at great heights under extreme weather conditions or similar situations where conditions cannot be controlled. The work requires the use of protective devices such as masks, goggles, gloves, etc.

SUPERVISORY AND MANAGEMENT RESPONSIBILITY

None.

**MINUTES, LIMESTONE COUNTY COMMISSION, APRIL 18, 2022
COMMISSION MEETING**

MINIMUM QUALIFICATIONS

- Knowledge and level of competency commonly associated with completion of specialized training in the field of work, in addition to basic skills typically associated with a high school education.
- Minimum of two (2) to four (4) years of work experience as an Equipment Operator I or equivalent.
- Possesses a current and valid Alabama Class B Commercial Driver's License (CDL); tanker endorsement preferred; must be insurable.
- Ability to work overtime, weekends, or emergencies as needed.
- Ability to be on-call.
- Ability to pass a pre-employment background check and drug screen(s).



Equipment Operator III

ENG-SC/03

Engineering – Stripe Crew

JOB SUMMARY

This position operates assigned equipment in the maintenance and repair of county roads and related infrastructure.

Under the supervision of the County Engineer, the employee operates various types of heavy equipment in the completion of highly complex and difficult construction and maintenance activities on County roads. Work involves physical placement of traffic striping, legends, and markings as required throughout the County per MUTCD standards. Work also involves assisting with routine maintenance of traffic signals and devices throughout the County, performing complex traffic control operations and assisting the sign, paving/mowing and signal crews as needed. This job is considered safety-sensitive and is subject to a pre-employment background check and random drug screens.

**MINUTES, LIMESTONE COUNTY COMMISSION, APRIL 18, 2022
COMMISSION MEETING**

MAJOR DUTIES

- Operates specialized paint equipment to place traffic markings.
- Operates raised pavement marking trailer to install pavement markers.
- Operates bucket truck with aerial lift to repair traffic signal lights if needed.
- Willing to assist with sign and signal crews as needed.
- Willing to respond to callouts when deemed necessary by Supervisor.
- May advise Supervisor on capabilities and best utilization of assigned equipment.
- Performs daily and monthly safety and maintenance vehicle inspections on assigned equipment.
- Performs preventative maintenance on equipment; checks tires, oil, fluid levels, and lights.
- Monitors gauges and other indicators during equipment operation for non-standard conditions.
- While equipment is being operated makes adjustments to insure proper pressures for painting.
- Ensures assigned equipment is fueled.
- Reports equipment maintenance status to the Supervisor.
- Performs work or may assist mechanic or other repairmen with mechanical repairs.
- Ensures the proper signage is visible while equipment is in or near roadway.
- Performs flagman duties, as needed, while on road maintenance jobs.
- Assists with project surveys.
- Maintains timecard.
- Generates daily reports of work completed.

**MINUTES, LIMESTONE COUNTY COMMISSION, APRIL 18, 2022
COMMISSION MEETING**

- Performs other duties as assigned.

KNOWLEDGE REQUIRED BY THE POSITION

- Knowledge of County rules, regulations, policies, and procedures. (Can be acquired on the job.)
- Knowledge of County road and bridge systems. (Can be acquired on the job.)
- Knowledge of safety rules including accident causation and prevention.
- Knowledge of traffic regulations.
- Substantial knowledge of practices applied in the use of a wide variety of heavy equipment for various maintenance and construction operations.
- Very high skill level in the operation of equipment assigned to permit maximum utilization of equipment capability; skill in operation of a wide variety of heavy equipment.
- Reading skills to comprehend operator manuals, directives, procedures, and instructions.
- Verbal skills to communicate effectively with supervisor and co-workers.
- Writing skills to clearly and neatly complete routine forms and records.
- Math skills to perform basic calculations (add, subtract, multiply, and divide.)
- Ability to use measuring instruments and to read equipment gauges.
- Ability to read and understand engineering drawings.
- Ability to read maps.
- Ability to work well with co-workers.
- Ability to work independently with minimal supervision.
- Ability to work under extreme weather conditions.
- Ability to move/lift objects greater than 50 lbs.

MINUTES, LIMESTONE COUNTY COMMISSION, APRIL 18, 2022 COMMISSION MEETING

- Ability to train other operators.
- Ability to wear and utilize safety equipment, as required.
- Ability to drive and safely operate equipment.

SUPERVISORY CONTROLS

The County Engineer and/or the Assistant County Engineer assigns work in terms of general instructions. The supervisor spot-checks completed work for compliance with procedures, accuracy, and the nature and propriety of the final results.

GUIDELINES

Guidelines include traffic laws, work safety policies, ALDOT regulations, Manual of Uniform Traffic Control Devices (MUTCD), and county policies and procedures. These guidelines are generally clear and specific but may require some interpretation in application.

COMPLEXITY/SCOPE OF WORK

- The work consists of related heavy equipment operation and maintenance duties. Inclement weather and heavy traffic contribute to the complexity of the position.
- The purpose of this position is to operate heavy equipment in the maintenance and repair of county roads, bridges, and related infrastructure. Successful performance contributes to the provision of safe and well-maintained county roadways.

CONTACTS

- Contacts are typically with coworkers, other county employees, contractors, vendors, utility companies, construction companies, and the general public.
- Contacts are typically to exchange information, resolve problems, and provide services.

PHYSICAL DEMANDS/ WORK ENVIRONMENT

- The work is typically performed while intermittently sitting, standing, bending, crouching, stooping, or crawling in restricted areas. The employee frequently lifts light and heavy objects over 50 lbs., climbs tall ladders, uses tools or equipment requiring a high degree of dexterity, distinguishes between shades of color, and utilizes the sense of smell.
- The work is typically performed outdoors, occasionally in cold or inclement weather. The employee is exposed to dust, dirt, grease, and machinery with moving parts. The

MINUTES, LIMESTONE COUNTY COMMISSION, APRIL 18, 2022 COMMISSION MEETING

work involves high risks with exposure to potentially dangerous situations or unusual environmental stress which require a range of safety and other precautions, e.g., working at great heights under extreme weather conditions or similar situations where conditions cannot be controlled. The work requires the use of protective devices such as masks, goggles, gloves, etc.

SUPERVISORY AND MANAGEMENT RESPONSIBILITY

None.

MINIMUM QUALIFICATIONS

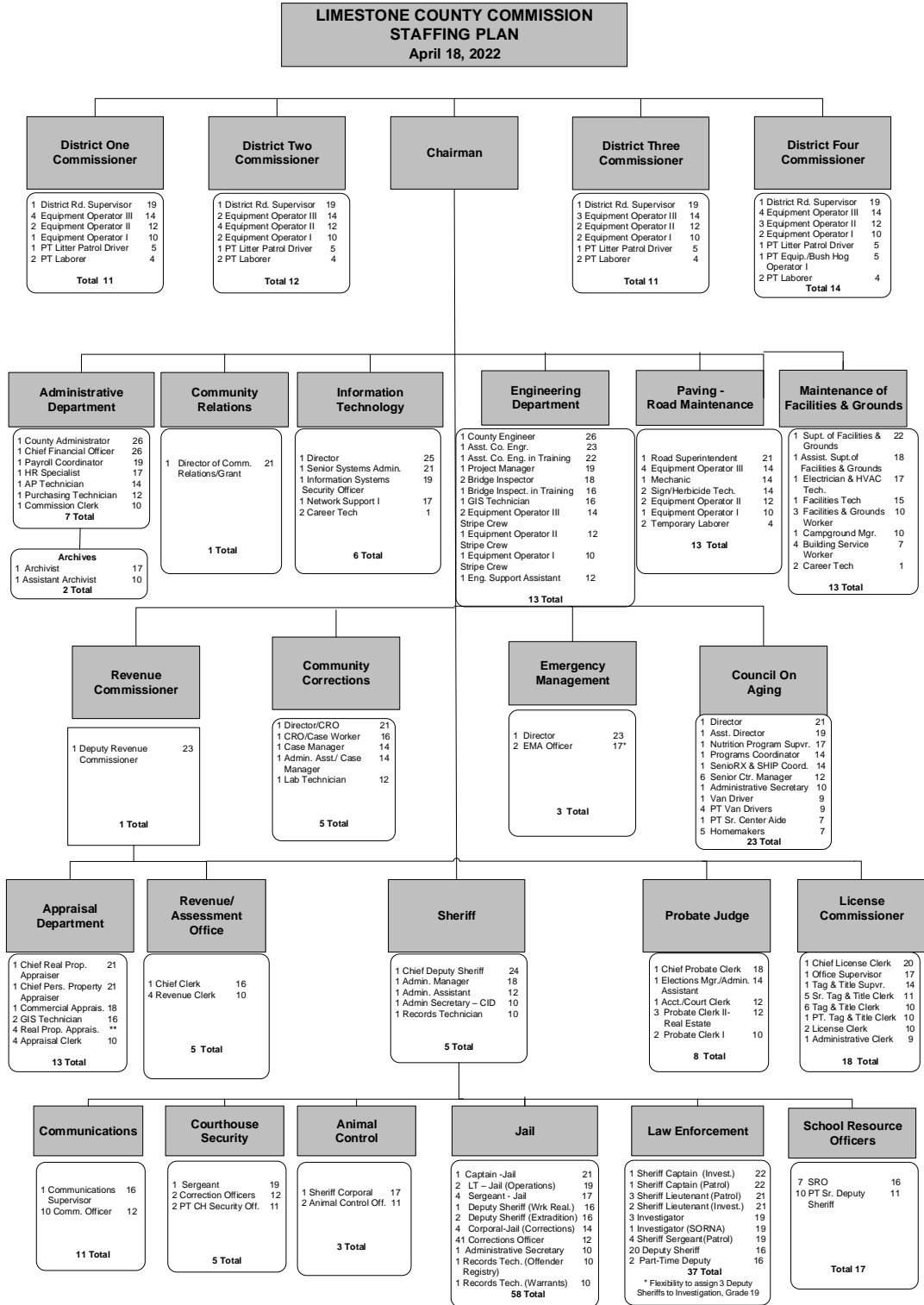
- Knowledge and level of competency commonly associated with completion of specialized training in the field of work, in addition to basic skills typically associated with a high school education.
- Minimum of two (2) to four (4) years of work experience as an Equipment Operator II or equivalent.
- Possesses a current and valid Alabama Class B Commercial Driver's License (CDL); tanker endorsement preferred; must be insurable.
- Ability to work overtime, weekends, or emergencies as needed.
- Ability to be on-call.
- Ability to pass a pre-employment background check and drug screen(s).

The Chairman asked if there was any discussion. There was no discussion. The Administrator called the roll Danny Barksdale, aye; Jason Black, aye; Daryl Sammet, aye; and LaDon Townsend, aye. Motion carries unanimously.

MOTION was made by LaDon Townsend and seconded by Daryl Sammet to amend the staffing plan under Engineering to add (2) Equipment Operator III/Stripe Crew Grade 14, (1) Equipment Operator II/Stripe Crew Grade 12 and (1) Equipment Operator I/Stripe Crew Grade 10.

MINUTES, LIMESTONE COUNTY COMMISSION, APRIL 18, 2022

COMMISSION MEETING



**MINUTES, LIMESTONE COUNTY COMMISSION, APRIL 18, 2022
COMMISSION MEETING**

The Chairman asked if there was any discussion. There was no discussion. The Administrator called the roll LaDon Townsend, aye; Daryl Sammet, aye; Danny Barksdale, aye; and Jason Black, aye. Motion carries unanimously.

MOTION was made by Jason Black and seconded by Daryl Sammet to approve to trade in the following inventory:

Department	Item	Serial #
Engineering	Caterpillar Milling Machine	NJX00117EQN071791

The Chairman asked if there was any discussion. There was no discussion. The Administrator called the roll Jason Black, aye; Daryl Sammet, aye; Danny Barksdale, aye; and LaDon Townsend, aye. Motion carries unanimously.

Commissioner Sammet gave project updates on State Line Road, Thach Road, and Dugger Road.

Commissioner Black reported that the Board of Education has agreed for the Commission to place excess millings at the school bus garage so that the buses can have a less muddy area to park. Said millings will need to be delivered by May 25th.

Commissioner Townsend gave a report regarding Seven Mile Post Road and Dupree Hollow Road bridge.

Chairman Daly reported that ADEM inquired if the Commission would be interested in purchasing the equipment that ADEM provided the Recycling Center, and the Chairman also reported that he had a someone contact him regarding possibly contracting recycling services. Chairman Daly requested prayers on behalf of the family of Athens City Council Member, Frank Travis, and City of Athens employee, Kathy Cothren, and anyone battling cancer.

Adjourned at 10:22 a.m. until 9:00 a.m. on Monday, May 2, 2022, at the Clinton Street Courthouse Annex, 100 South Clinton Street, Athens, Alabama.