

Limestone
County Commission

Chairman
Mark Yarbrough

Administrator
Pam Ball

Commissioners:
Stanley Hill
Steve Turner
Jason Black
Ben Harrison



September 10, 2018

INVITATION FOR BIDS
Proposal No. 2660

Sheriff's Office
Dispatch & Jail Uniforms

Notice is hereby given that the Commission of Limestone County, Alabama will receive competitive bids for **Winter and Summer Uniforms for the Limestone County Sheriff's Office** as per attached specifications.

Bid is effective **October 1, 2018 and ending on September 30, 2019**. It is anticipated that the contract will be for a period of one (1) year, but the contract may be renewed, if agreed by the parties, for one-year terms not to exceed three (3) years. The county reserves the right to opt out of renewal and/or terminate the contract if not satisfied with the vendor. Any and all taxes and/or fees must be included in bid prices. Prices quoted are firm for the life of the contract.

Subsequent to the award of the contract, any merchandise found to be inferior to the samples submitted will not be accepted.

You are invited to bid on the attached specifications. The county reserves the right to accept or reject any or all parts of this bid and to award in whole or part, whichever is in the best interest of the county.

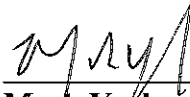
Bids will be opened on **Thursday, the 27th of September 2018, at 10:00 a.m.** and awarded on **Monday, the 1st of October 2018, at 10:00 a.m.**

REQUIREMENT: Pursuant to Alabama Code 31-13-9, as a condition of the award of any contract, the business entity or employer, and any of its subcontractors, shall provide a sworn affidavit and documentation that it will not knowingly employ, hire for employment, or continue to employ an unauthorized alien; that it is enrolled in the E-Verify program; and, during the contract period, it will participate in the E-Verify program and will verify every employee that is required to be verified under applicable state and federal laws. During the performance of the contract, the business entity or employer shall participate in the E-Verify program and shall verify every employee that is required to be verified according to the applicable federal rules and regulations.

Request samples of each item listed and mailed to: Limestone County Commission, 310 W. Washington Street, Athens, AL 35611.

All samples will be returned at bidder's expense with no financial liability to be incurred by the Limestone County Sheriff's Office for their shipping, loss or damage.

All bids **must be sealed** and the words "BID," bid proposal number, name of item, and opening date on outside of envelope.



**Mark Yarbrough, Chairman
Limestone County Commission**

Specification for Men/Women Performance Polo OR Its Equivalent

Design:

3 button placket, self-fabric button down collar, sleeve and bodice underarm gussets, 3 mic-clips and pen/pencil pocket.

Shell Fabric:

The body fabric shall be 94% POLYESTER (Coolon Fiber)/6% SPANDEX INTERLOCK 75D/36F + 20D spandex with a weight of 210-220gm/m². Moisture Wicking and Anti Wrinkle performance are in the fiber.

Minimum performance standards including:

AATCC 8 Crocking (must pass 4 dry crock & 2 wet crock)
AATCC 15 Perspiration
AATCC 100 50 Home Laundry (staph testing for stain & odor)
AATCC 150 Shrinkage + or minus 5%/143 appearance
ASTM 2594 Stretch & Recovery
ASTM 3776 Fabric Weight
ASTM 3786 Bursting Strength

Fabric shall be finished with DuPont Teflon Ultra Release fabric protector for deep clean stain release.

Inside Back Neck ½ Moon Patch & Under Arm Gussets:

Accent fabric shall be 100% POLYESTER MESH
Polyester 75/72 25X46 176gm/m². Moisture Wicking in the fiber.

Collar:

The collar points shall have a height of 2 3/4" from center front to top edge and be made of two plies of shell material plus an interlining. The collar points shall be well shaped and symmetrical. Under collar has a button-down feature that keeps the collar from curling for clean professional look.

Front Placket:

The front placket measures 1 ½" X 6 ½" and includes light weight interfacing to stabilize layers in both front and back placket. The placket is single needle stitched 1/6" around all edges of front and back. The placket has 3 button openings with top button hole horizontal and placed on the collar stand, 2nd and 3rd to be vertical on placket. Closure is with 20 ligne melamine buttons

Pockets:

There are 2 pen pockets forward of center on wearers left sleeve. Both pockets are sewn and finished side by side, approximately 2" x 6". The pockets are double welt opening and bar tacked in center to divide both pen/pencil pockets for reinforcement.

Mic Clips:

There are 2 Mic-Clip welt pockets, one on each shoulder seam 2 ¾" from neckline and one Mic-Clip loop at bottom of front placket.

Side Vents:

Back length is 1 ½" longer than front. Inside seams is clean finish in self fabric. Size large back length is 31" from neck seam to hem; center front length is 27" from top of collar stand to hem. All sizes will be graded appropriately.

Sleeves:

The sleeves shall be short sleeve. The underarm shall have an action armhole gusset using 100% polyester mesh fabrication which extends into the bodice to provide for excellent ventilation and full range of motion. The hem shall be designed with 1" clean finish using ¼" double needle top stitch. Wearers right sleeve hem will have manufacturer star logo label centered between hem and double needle top stitching.

Buttons:

The placket has 20 ligne dyed to match melamine buttons with custom molded around the face of button. Under collar button shall be 14 ligne without logo. All buttons to be sewn with the "X" stitch for strong reinforcement.

Stitching Reinforcement:

The bottom placket mic tab, side vents and pen pockets shall be bar tacked at high stress areas.

Size and Tag:

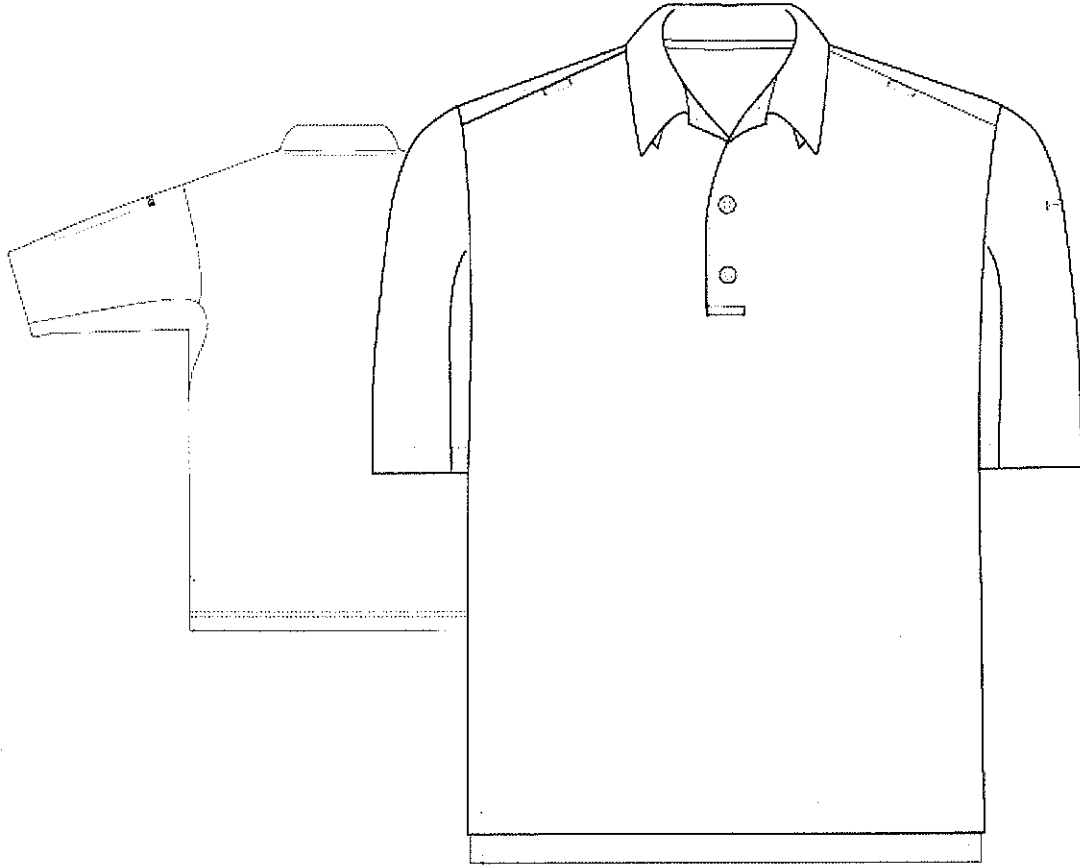
Polo shall have a tag-less size and care instruction label printed into the center back just below the collar stand.

Sizes:

XS-5XL.

Colors:

Black.



Logo:

Monogrammed Limestone Sheriff's Logo on left side of chest.

Specification for Performance Polo – Men/Women Long Sleeve OR Its Equivalent

Design:

3 button placket, self-fabric button down collar, sleeve and bodice underarm gussets, 3 mic-clips and pen/pencil pocket.

Shell Fabric:

The body fabric shall be 94% POLYESTER / 6% SPANDEX INTERLOCK 75D/36F + 20D spandex with a weight of 210-220gm/m². Moisture Wicking and Anti -Wrinkle performance are in the fiber.

Minimum performance standards including:

AATCC 8 Crocking (must pass 4 dry crock & 2 wet crock)

AATCC 15 Perspiration

AATCC 100 50 Home Laundry (staph testing for stain & odor)

AATCC 150 Shrinkage + or minus 5%/143 appearance

ASTM 2594 Stretch & Recovery

ASTM 3776 Fabric Weight

ASTM 3786 Bursting Strength

Fabric shall be finished with a durable soil and stain release treatment.

Inside Back Neck ½ Moon Patch & Under Arm Gussets:

Accent fabric shall be 100% POLYESTER MESH

Polyester 75/72 25X46 176gm/m². Moisture Wicking in the fiber.

Collar:

The collar points shall have a height of 2 3/4" from center front to top edge and be made of two plies of shell material plus an interlining. The collar points shall be well shaped and symmetrical. Under collar has a button-down feature that keeps the collar from curling for clean professional look.

Front Placket:

The front placket measures 1 ½" X6 ½" and includes light weight interfacing to stabilize layers in both front and back placket. The placket is single needle stitched 1/6" around all edges of front and back The placket has 3 button openings with top button hole horizontal and placed on the collar stand, 2nd and 3rd to be vertical on placket. Closure is with 20 ligne melamine buttons

Pockets:

There are 2 pen pockets forward of center on wearers left sleeve. Both pockets are sewn and finished side by side, approximately 2" x 6". The pockets are double welt opening and bar tacked in center to divide both pen/pencil pockets for reinforcement.

Mic Clips:

There are 2 Mic-Clip welt pockets, one on each shoulder seam 2 ¾" from neckline and one Mic-Clip loop at bottom of front placket.

Side Vents:

Back length is 1 ½" longer than front. Inside seams is clean finish in self fabric.

Size large back length is 31" from neck seam to hem; center front length is 27" from top of collar stand to hem. All sizes will be graded appropriately.

Sleeves:

The sleeves shall be long sleeve. The underarm shall have an action armhole gusset using 100% polyester mesh fabrication which extends into the bodice to provide for excellent ventilation and full range of motion. The hem shall be 1" clean finish using ¼" double needle cover stitch. Wears left sleeve shall have a double slotted pen pocket.

Buttons:

The placket has 20 ligne dyed to match melamine buttons with custom molded around the face of button. Under collar button shall be 14 ligne without logo. All buttons to be sewn with the "X" stitch for strong reinforcement.

Stitching Reinforcement:

The bottom placket mic tab, side vents and pen pockets shall be bar tacked at high stress areas.

Size and Tag:

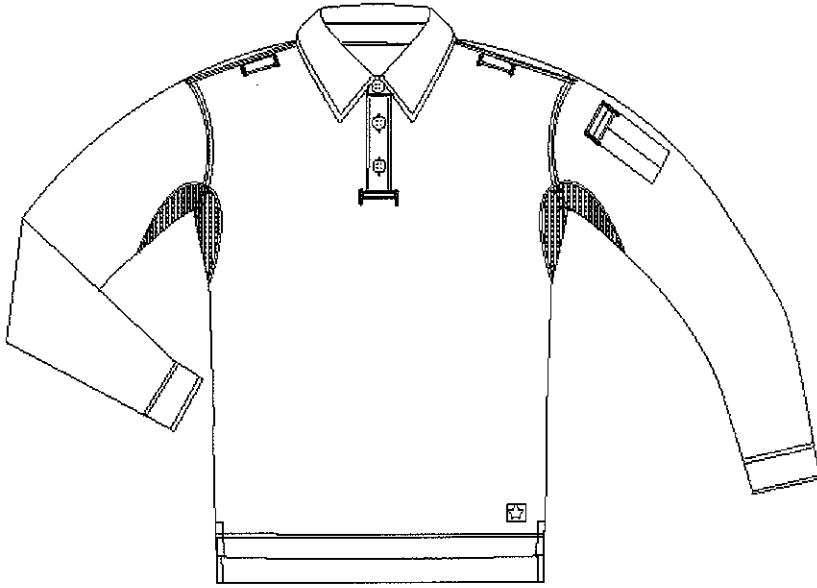
Polo shall have a tag-less size and care instruction label printed into the center back just below the collar stand.

Sizes:

XS-5XL

Colors:

Black



Logo:
Monogrammed Limestone Sheriff's Logo on left side of chest.

Specifications of Style F5243-50 Lightweight Tactical Trousers OR Its Equivalent

Fabric:

6.4 oz per yard - 65/35 Poly/Cotton Ripstop, to eliminate shrinkage, and reduce post-laundering wrinkle, treated with Dupont Teflon 4 for stain resistance and color retention. 100% cotton ripstop will be cause for immediate rejection.

Design:

The pant shall incorporate a pleated front and two ¼ top pockets, two rear pockets, secured with hook and loop, straight across, (slanted slash pockets will not be acceptable), as well as two full sized inverted pleat cargo pockets.

Other pocket includes one small cell phone/magazine pocket. There shall be no loose straps, which could get caught on objects during a tactical situation. Any loops or straps will be cause for immediate rejection.

Length/Sizes:

Men's waist sizes 28"-54"

Women's: Size 2 through 20 (Unhemmed from factory)

Must offer open bottom in 28, 48-54". All sizes 30" – 46" are finished in 30,32,34,36 inseams.

Pocket Design/Construction:

Pockets shall all be secured with Double needle construction. Cargo pockets shall have mitered pocket flaps and must be lined with GST* pellon that is used in US Military Garments. Pockets shall be secured with hook and loop.

Pocketing shall be produced with self-goods for strength and durability. Any product other than self-goods manufacture will be cause for immediate rejection. Inside rear pockets there shall be additional wallet pocket for ease of use.

Waistband:

The band will be made with 1 1/2" wide elastic on each side of the waistband, allowing the waist to expand up to 3.5" in circumference for increased comfort and mobility. The waistband shall be closed with a snap cover and crush-proof hook and eye, or brass crimped nipple snap. The waistband shall be top and bottom-stitched for increased strength and to prevent rollover. A snap closure will be cause for rejection.

Belt Loops:

Belt loops shall be keystone style and have a minimum opening of 2". There must be a minimum of five belt loops at the waist, 2 in front and 3 in back. There is a Brass D ring at the right front belt loop.

Labeling:

Trouser must have a care label size label, fiber content label permanently attached to the garment.

Zippers:

Zippers to be self repairing YKK Brass.

Color:

Khaki and Coyote.

Manufacturer:

An ISO 9001 certified company must do manufacturing. ISO certificates must be available at the time of bid opening.

Specifications for Style F5220 Heavy Weight Tactical Trouser OR Its Equivalent**FABRIC:**

8.5 oz 65% Polyester 35% Cotton Canvas that will not Shrink, Fade or Wrinkle. Treated with DuPont Teflon 4 for stain resistance and color retention.

DESIGN:

The Tactical trouser is designed with a pleated front and seven functional pockets: two front slash pockets, two rear hip pockets, two full sized cargo pockets and one cell phone/magazine pocket. The waistband has an action elastic insert on each side and five extra wide belt loops. The DuPont Teflon fabric coating adds a powerful stain protection without affecting the weight, look, feel or breath ability of the fabric.

Pocket Design/Construction:

The trousers have back left and right single welt hip pockets with hook and loop fasteners. The hip pockets are 9 inches deep and feature internal pockets 5x5 inches to make a wallet or other small item more accessible. The two angled front slash pockets will have a minimum opening of 6½ inches and are extra deep (approximately 11½ inches). The inside of the right pocket contains an internal coin pocket 4 x 3 inches. The front cargo pockets are centered on each leg side seam and measure 6 ¼ by 7 inches with an inverted bellow pleat. The flaps on the cargo pockets will be mitered and secured with hook and loop fasteners. Above the left cargo pocket is a cell phone/magazine pocket with hook and loop closure flap.

Waistband:

The 1½ inch wide waistband will have an elastic action insert on each side to allow the waistband to expand in circumference for increased comfort and mobility. The waistband will be top and bottom stitched for increased strength and to prevent rollover. The waistband closure is with a sturdy snap, a French Fly and a self-repairing YKK Brass Zipper. There will be 5 over-sized belt loops at the waist, 2 in front and 3 in the back each with a 2-inch wide opening. There is a Brass D ring at the right front belt loop. The pants will be constructed with double layer knee and seat for added strength and durability. In addition, the knees will have an interior kneepad pocket. All exterior seams will be double needle-felled construction with matching thread. All pockets will be of 5.04 oz OST Starspun fabric.

LABEL:

The interior of the pants will have a care/content label below the waistband in the back containing the following information: Fabric content, Care instructions, Size and Country of Origin.

SIZES:

Men's: 28-54, (Waist 46" and above, inseams will be 37" unhemmed from factory).
Women's: Size 2 through 20 (Unhemmed from factory).

COLORS:

Khaki and Coyote.

MANUFACTURER:

An ISO 9001 certified company must do manufacturing. ISO certificate must be included with bid. No substitutes.

Specifications for Heavyweight Jacket Or Equivalent

Soft Shell Jacket

- Blend: Shell – 92% Polyester / 8% Spandex
Lining – 100% Polyester Fleece
- Care: Industrial Wash, Light Soil, or Home wash
- Closure: Full zip front with zipper garage
- Collar: Stand up collar with fleece lining
- Fabric: 10.5 oz Soft Shell
- Finish: Water-resistant and wind-resistant
- Pocket: Napoleon pocket with concealed zipper closure, two lower on seam pockets with concealed zipper closures, two interior pockets
- Color: Black
- Sizes: XS – 5X
- Logo: Monogrammed Logo for Limestone County Sheriff's Office on left side chest

Specifications for Lightweight Jacket or Equivalent

- 100 % Nylon with flannel lining
- Color - Black
- Color match snap buttons
- Byron collar, raglan sleeves with elastic cuffs
- Drawstring bottom hem
- Reinforced pockets
- Sizes: XS – 5X
- Logo: Monogrammed Logo for Limestone County Sheriff's Office on left side chest

Additional Specifications

Orders will be completed in a timely manner. If ordered products are not available or placed on back order, customer must be advised immediately. Shipping of completed orders will not be delayed more than 15 business days. Excessive orders that result in back order will not be considered favorable during bid period.

ADDITIONAL AWARDING VENDOR REQUIREMENT

Vendor awarded bid must provide a representative on-site to measure for proper sizing of individual uniforms.

Bid is effective from **October 1, 2018** until **September 30, 2019**. It is anticipated that the contract will be for a period of one (1) year. Contract may be renewed if agreed by the parties for one-year terms not to exceed three (3) years. The County reserves the right to opt out of renewal and /or terminate the contract if not satisfied with the vendor. **Any and all taxes and/or fees must be included in bid prices. Prices quoted are firm for the life of the contract.**

Samples of the items being bid by bid invitation must be received by the opening date and time of this bid.

If you have any questions concerning this bid, contact Lt. Tammy Waddell at 256-232-0111.

Cost for Performance Polo (Men/Women Short Sleeve)	\$ _____ Size(s): _____ \$ _____ Size(s): _____	Meets Requirements: <input type="checkbox"/> yes <input type="checkbox"/> no Additional Notes:
Cost for Performance Polo (Men/Women Long Sleeve)	\$ _____ Size(s): _____ \$ _____ Size(s): _____	Meets Requirements: <input type="checkbox"/> yes <input type="checkbox"/> no Additional Notes:
Cost for Lightweight Tactical Trouser	\$ _____ Size(s): _____ \$ _____ Size(s): _____	Meets Requirements: <input type="checkbox"/> yes <input type="checkbox"/> no Additional Notes:
Cost for Heavyweight Tactical Trouser	\$ _____ Size(s): _____ \$ _____ Size(s): _____	Meets Requirements: <input type="checkbox"/> yes <input type="checkbox"/> no Additional Notes:
Cost for Heavyweight Jacket	\$ _____ Size(s): _____ \$ _____ Size(s): _____	Meets Requirements: <input type="checkbox"/> yes <input type="checkbox"/> no Additional Notes:
Cost for Lightweight Jacket	\$ _____ Size(s): _____ \$ _____ Size(s): _____	Meets Requirements: <input type="checkbox"/> yes <input type="checkbox"/> no Additional Notes:

Provide Representative For On-site Measurements: Yes No

Return Shipping Label Included: Yes No

NAME OF COMPANY:

ADDRESS:

PHONE NO:

CONTACT NAME:

Please print

E-MAIL:
